

AccessData® 6.2 Release—Feature in Focus:

AD eDiscovery® Dashboard

When it comes to managing your e-discovery, you want an integrated, end-to-end platform that offers enterprise-wide search, targeted collection, systemized preservation, litigation hold, processing, data assessment, and complete legal review—all while keeping your costs in line and reducing risk. You also need a solution that's easy to use, allowing you to work efficiently and seamlessly.

The 6.2 release of AD eDiscovery® does all this and more—now with superior usability, deeper insights and faster processing speeds. At the forefront of this release is the new **HTML5 widget-based dashboard**, which provides a **single, comprehensive view** into the status of your e-discovery workflows.

View key functions such as collection, processing, litigation holds and document review sets from “widgets” on the dashboard.

Get a fast status on active cases in the system, total objects and file sizes to see a holistic view of your e-discovery. Add more system-wide metrics to meet your reporting requirements, such as total items, total file size and more.

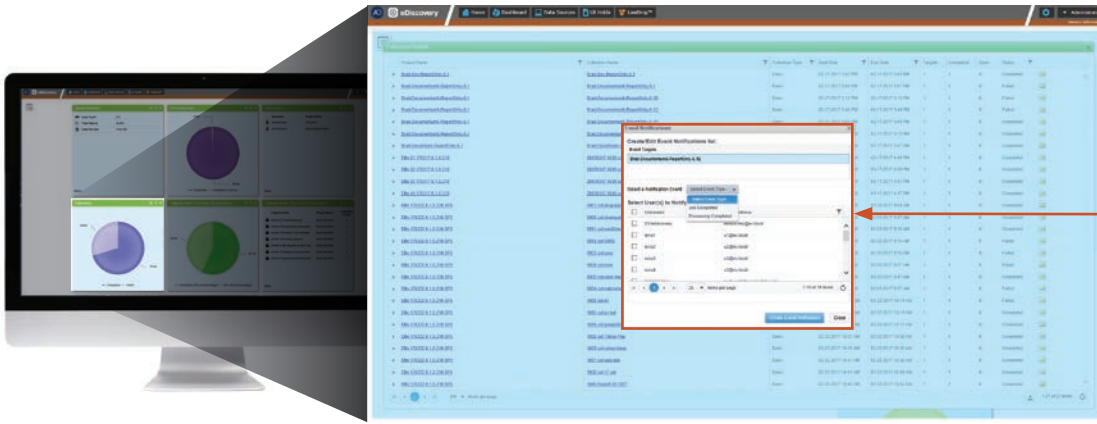
See who the active users are within the system at a glance.



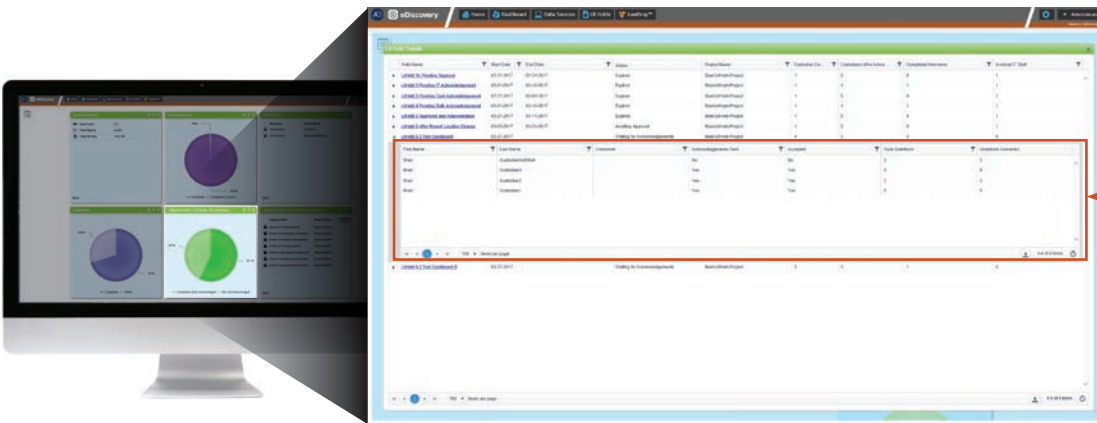
Keep a close eye on collections—those that have completed successfully and those that have failed and need to be revisited.

Quickly view custodian responses to litigation holds—those that have acknowledged or not yet responded to a request.

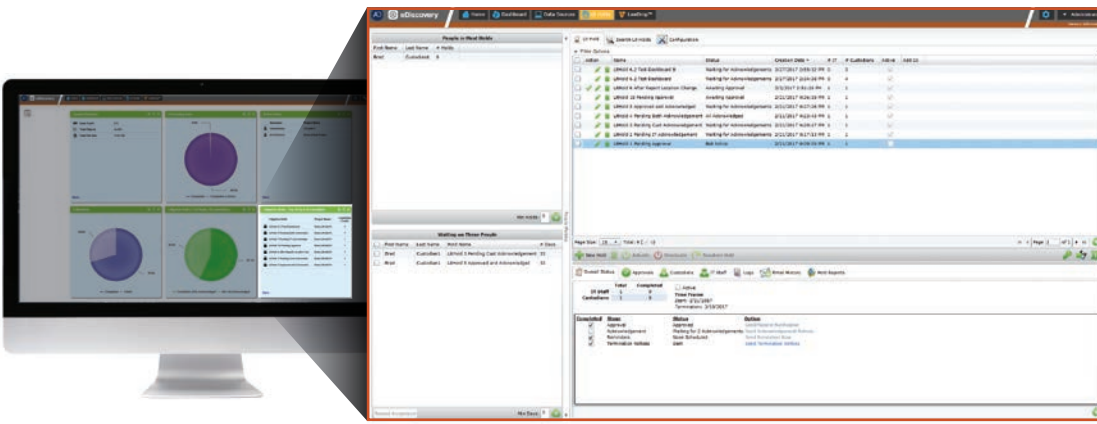
Create a widget to view the top 10 active litigation holds by number of custodians or any other parameter of value to your reporting, such as status or acknowledgement count.



Set alerts and get notified for important events, such as when processing jobs complete.



Drill down into a widget for additional details on any task in the workflow, such as processing status. You can see when jobs start or finish, the nature of the job (e.g., production, bulk printing, ingestion, etc.) or any errors in processing.



Get deeper insights into your litigation holds including status on outstanding custodian acknowledgement; send reminders, notices or terminations; search through litigation holds; activate or deactivate holds.

In addition to the new dashboard, with the 6.2 release of AD eDiscovery you can stop a lengthy ingestion process in its tracks, print faster with better quality, conduct searches in new ways, and connect and collect data from the most-used data repositories and cloud platforms, including Box and Microsoft® Office 365®.

For more information or to get a demo, visit [marketing.accessdata.com/6.2 release](http://marketing.accessdata.com/6.2%20release) or email us at info@accessdata.com.

Visit us online:
www.accessdata.com



Global Headquarters
+1 801 377 5410
588 West 300 South
London, Utah

North American Sales
+1 800 574 5199
Fax: +1 801 765 4370
sales@accessdata.com

International Sales
+44 20 7010 7800
internationalsales@accessdata.com