



## Manage Internal Forensic Investigations Across the Enterprise

From multiple office locations to massive employee pools and remote workers, AD Enterprise provides deep visibility into your organization's data, to uncover employee wrongdoing and facilitate regulatory and legal requirements.

Suspect employee misconduct? Investigating potential IT policy violations? Tipped off to potential financial reporting concerns? AD Enterprise helps you conduct focused forensic investigations quickly, remotely and covertly, without alerting employees or interrupting business operations.

### Conduct forensically sound, remote, covert internal investigations

- **Gain visibility across endpoints.** With AD Enterprise, get visibility into all activity on your endpoints, network shares and peripheral devices. Targeted investigations can be done on up to 20 computers simultaneously. Perform investigations whether suspect employees are logged into your network or not ... whether they are online or not ... and information will be sent back to you when they're back online.
- **Uncover "hidden" evidence.** AD Enterprise can help with restoration of partially deleted data, fragmented files, hidden processes and volatile data from a wide array of file types and data sources.
- **Respond to incidents.** Proactively or reactively scan thousands of endpoints to identify rogue processes (even those that are hidden) and anomalous activity. Quickly determine which systems, devices and applications have been affected and prioritize remediation ... all from a centralized location.
- **Investigate discreetly.** Perform investigations covertly to avoid alerting employees to the investigation and prevent disruption of business operations.
- **Ensure data integrity.** With forensically sound collection capabilities and the AccessData® single, secure back-end database reducing data movement and potential data spoliation, you can be confident evidence is collected and preserved in a legally defensible manner.
- **Collaborate using fewer resources.** IT, Legal, Compliance, Human Resources and Security teams have insight into the case and are even more tightly aligned with a forensically secure back-end database. Only AccessData offers a shared case database from investigations throughout litigation.

## Dispersed data? No problem!

Many organizations have complex structures for data access and storage. AD Enterprise can preview and acquire data from remote endpoints, whether it's stored in geographically dispersed offices or in the cloud, eliminating the need and cost associated with going outside your organization for help with digital forensics.

And AD Enterprise supports forensic examination on a broad range of operating systems including Windows®, Linux®, Mac®, UNIX®, Android™, iOS® and BlackBerry®.

To learn more or request a demo, visit [accessdata.com/products/ADEnterprise](http://accessdata.com/products/ADEnterprise).

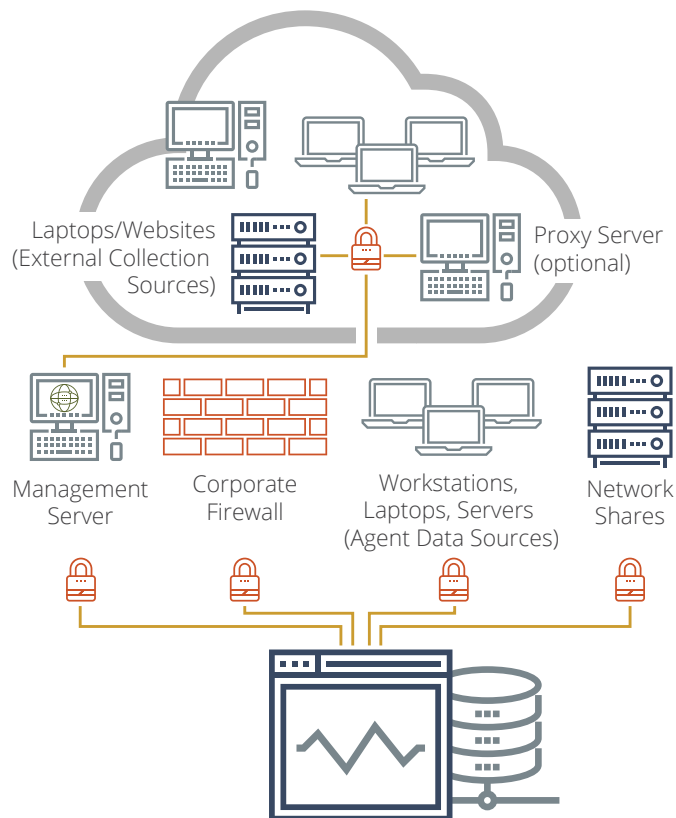
## Support & Training

Our goal is to provide superior technical support, product training and development to ensure users achieve the most value from their technology investment.

Support options can be found at [marketing.accessdata.com/Support](http://marketing.accessdata.com/Support) and include:

- Telephone technical support
- A knowledge base portal containing solutions to common questions
- A discussion forum where users can post questions and find answers
- User guides, quick-reference guides and more!

Training options can be found at [marketing.accessdata.com/ADTraining](http://marketing.accessdata.com/ADTraining) and combine a unique teaching methodology with state-of-the-art technology. Options include in-person classroom, live online, or via our Learning Management System (LMS). For access to LMS visit [marketing.accessdata.com/LMStraining](http://marketing.accessdata.com/LMStraining)



## Need to analyze and review data after collection?

Then you need AD eDiscovery®. Web-based with built-in analytics and review capabilities, AD eDiscovery allows users to schedule large audits of computers, network shares and data repositories to collect data, then apply a wide array of complex visualization, data analytics and document review tools to quickly identify and produce key documents as part of e-discovery.

If you're looking for an end-to-end tool to address your e-discovery needs, learn more about AD eDiscovery at [accessdata.com/products/ADEdiscovery](http://accessdata.com/products/ADEdiscovery)



Whether it's for investigation, litigation or compliance, AccessData® offers industry-leading solutions that put the power of forensics in your hands. For 30 years, AccessData has worked with more than 130,000 clients in law enforcement, government agencies, corporations and law firms around the world to understand and focus on their unique collection-to-analysis needs. The result? Products that empower faster results, better insights, and more connectivity. For more information, visit [www.accessdata.com](http://www.accessdata.com)

Visit us online:  
[www.accessdata.com](http://www.accessdata.com)



**Global Headquarters**  
+1 801 377 5410  
588 West 300 South  
London, Utah

**North American Sales**  
+1 800 574 5199  
Fax: +1 801 765 4370  
[sales@accessdata.com](mailto:sales@accessdata.com)

**International Sales**  
+44 20 7010 7800  
[internationalsales@accessdata.com](mailto:internationalsales@accessdata.com)